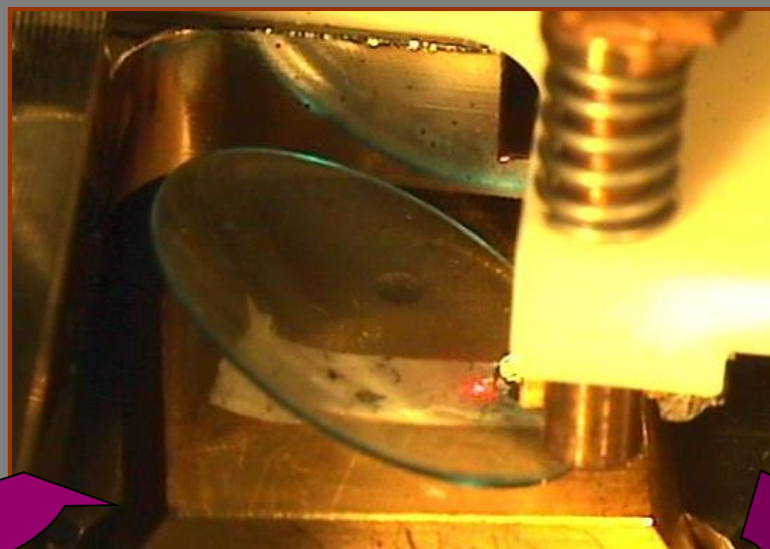


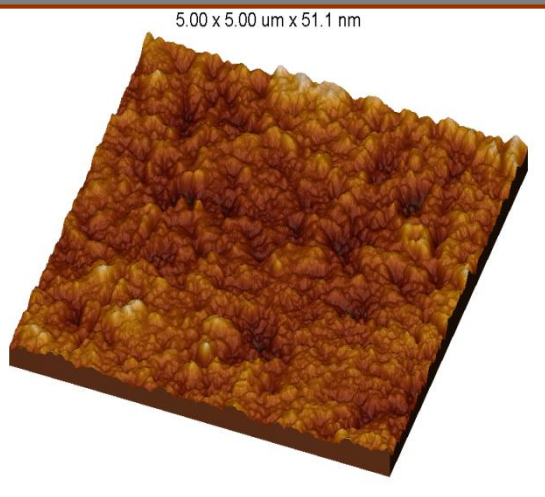
**MIKROSKOPIJA  
ATOMSKIM SILAMA  
OBRAĐENE POVRŠINE  
KONTAKTNOG SOČIVA**

JSPM-5200

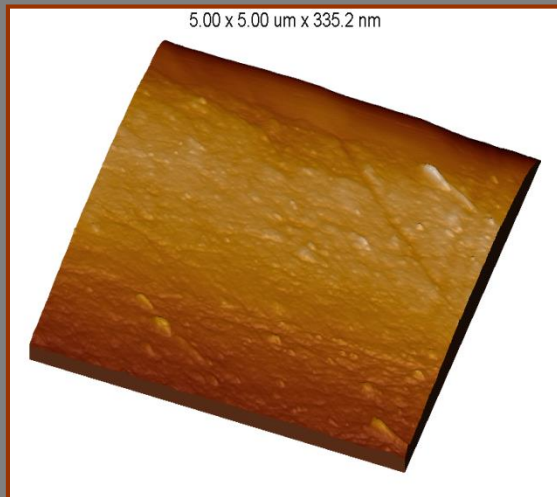
Полирана површина био-полимера



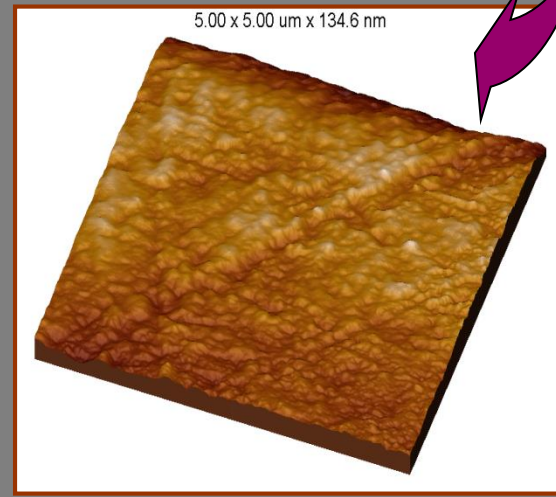
5.00 x 5.00  $\mu\text{m}$  x 51.1 nm

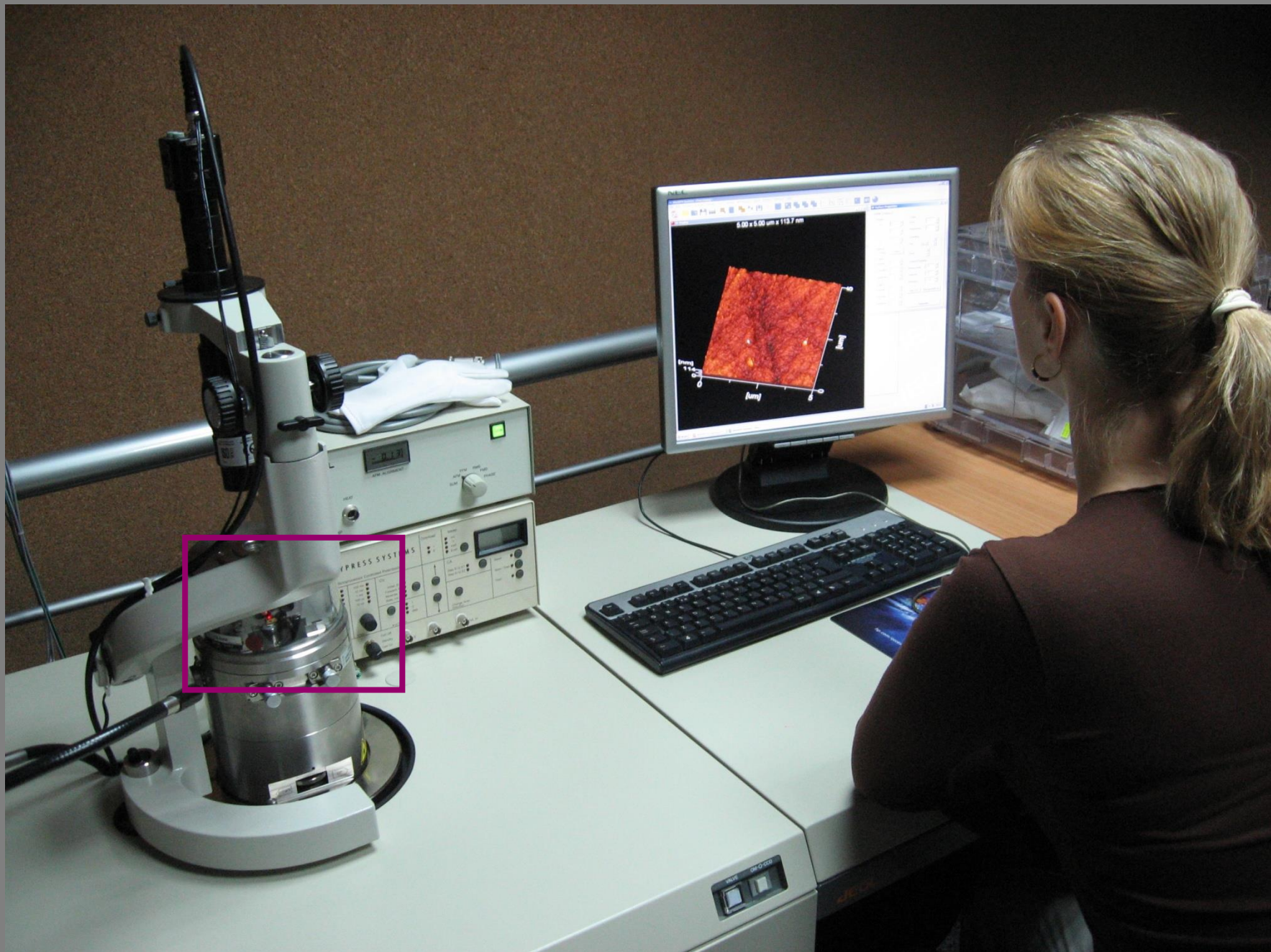


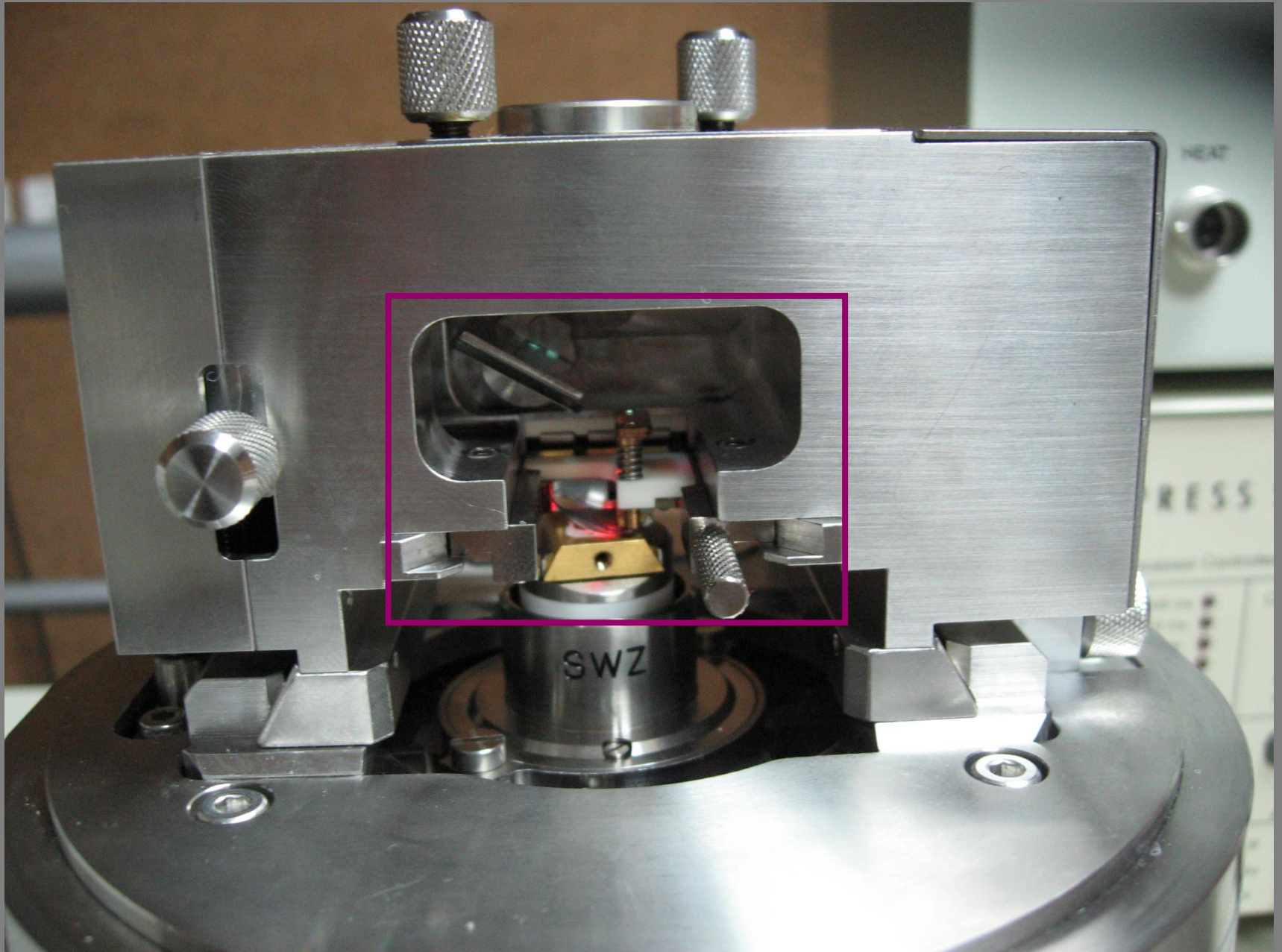
5.00 x 5.00  $\mu\text{m}$  x 335.2 nm



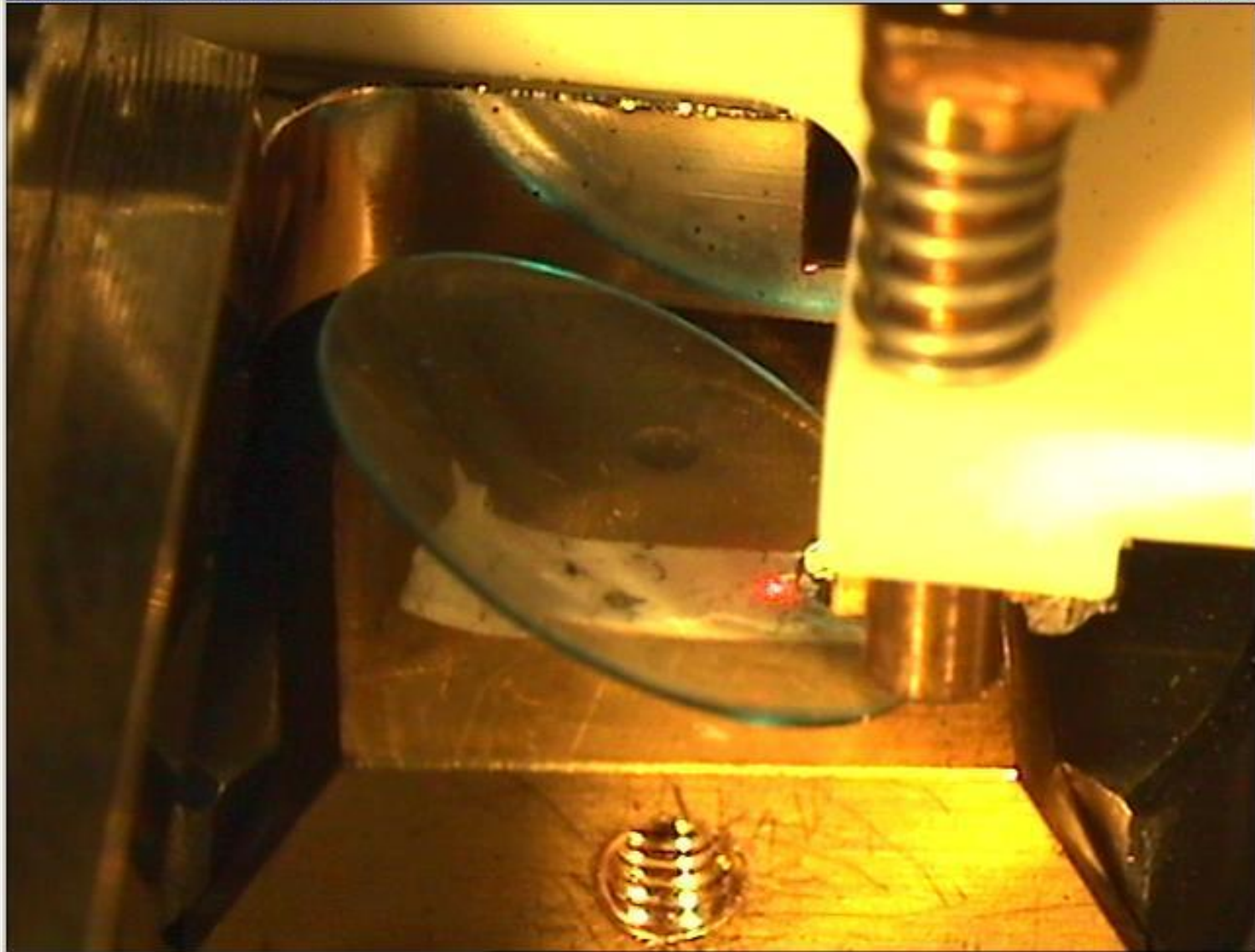
5.00 x 5.00  $\mu\text{m}$  x 134.6 nm

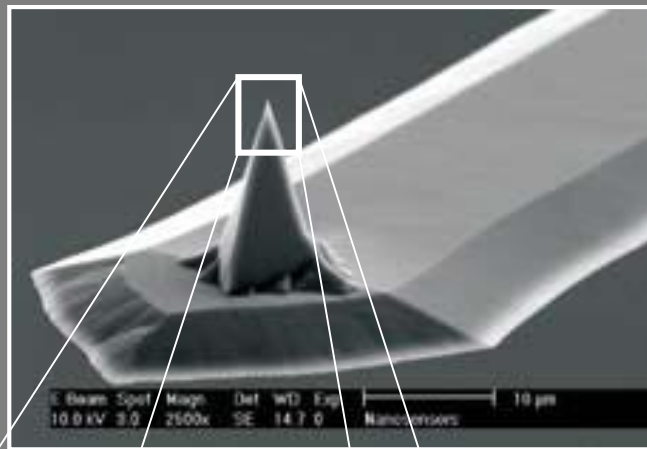
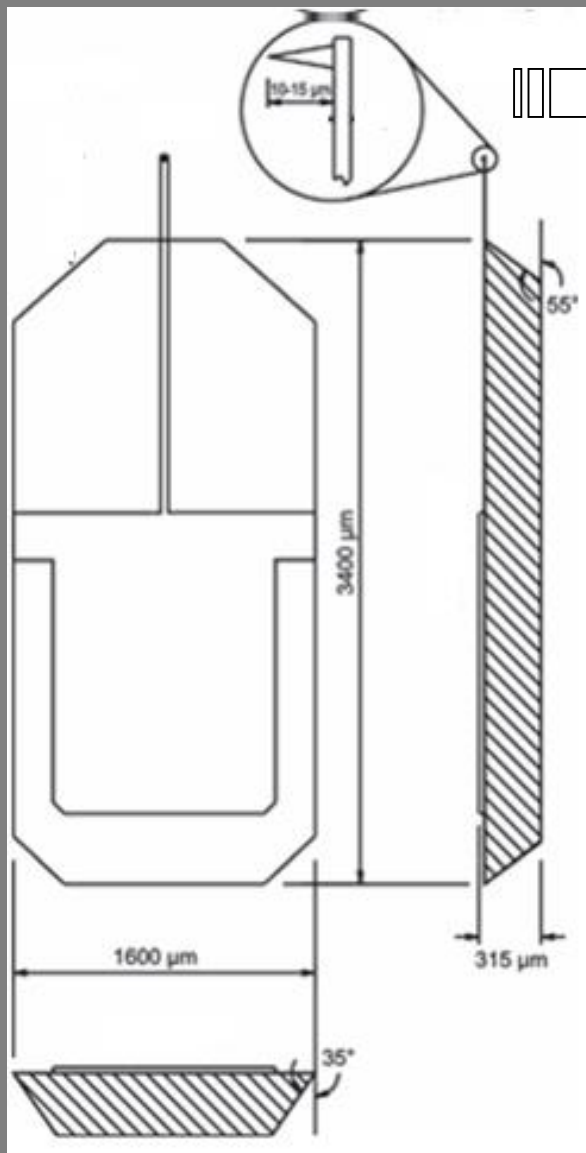




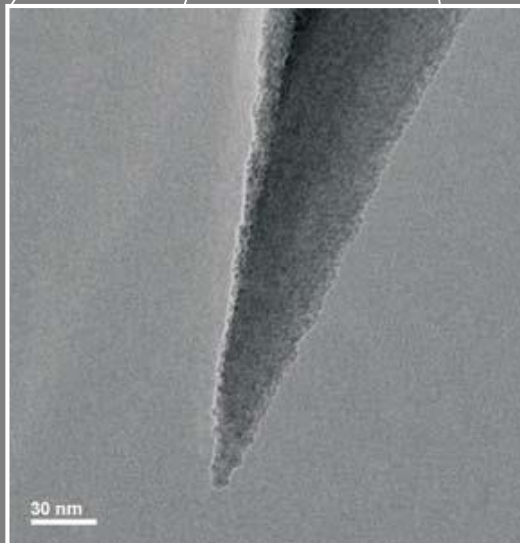


PXC200 DirectDraw Sample

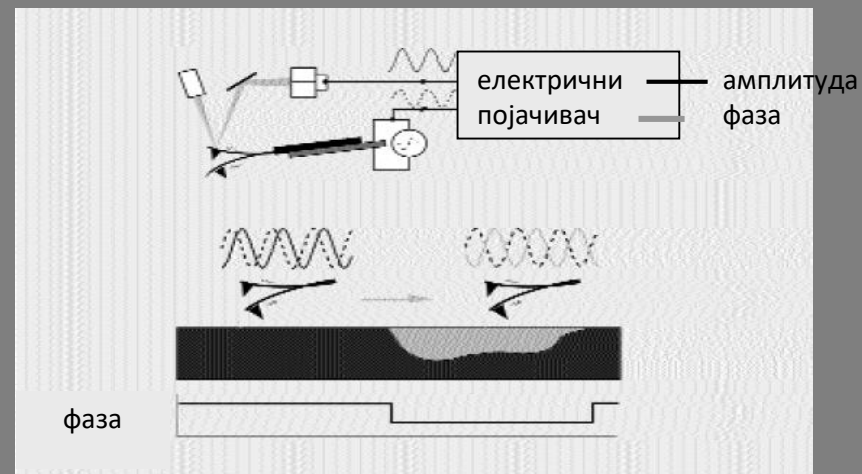
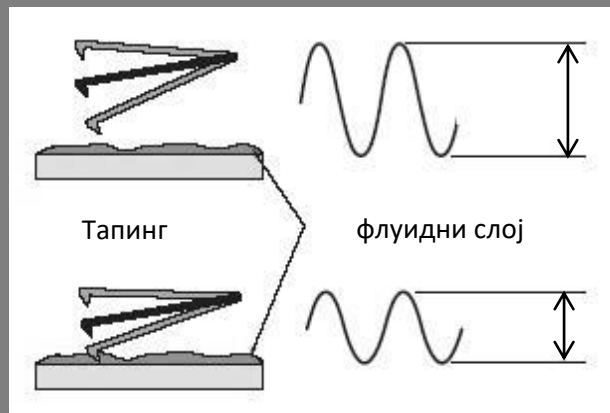
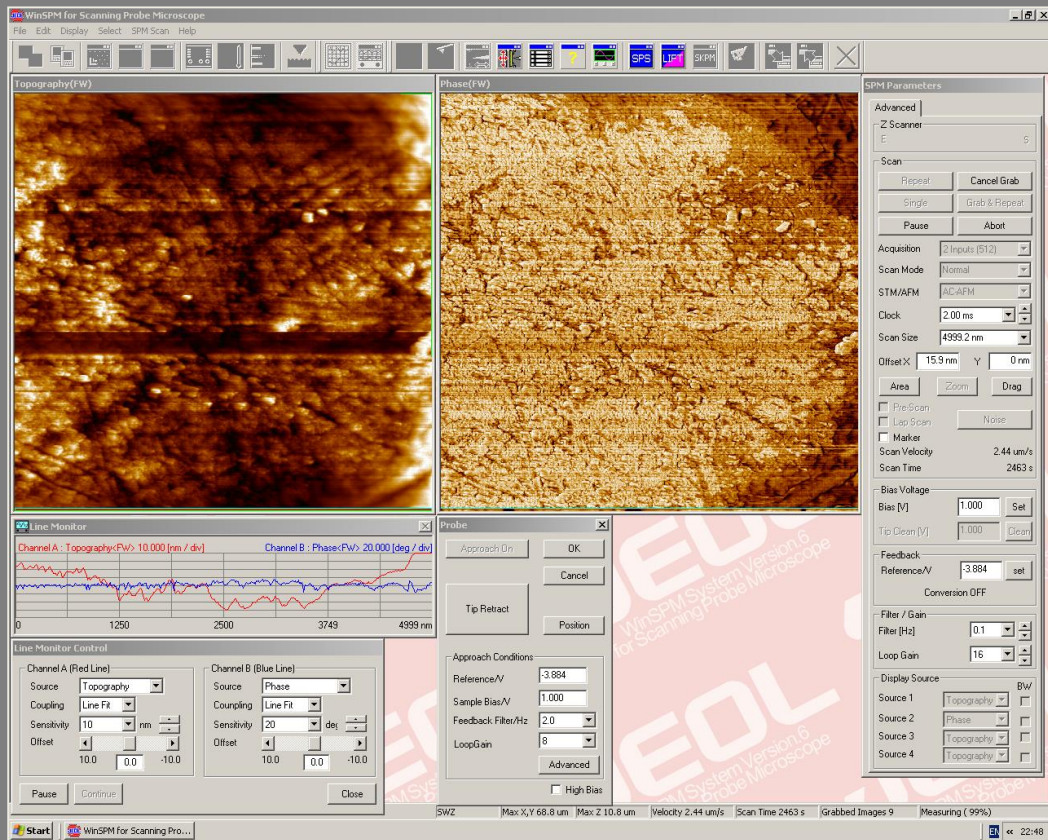


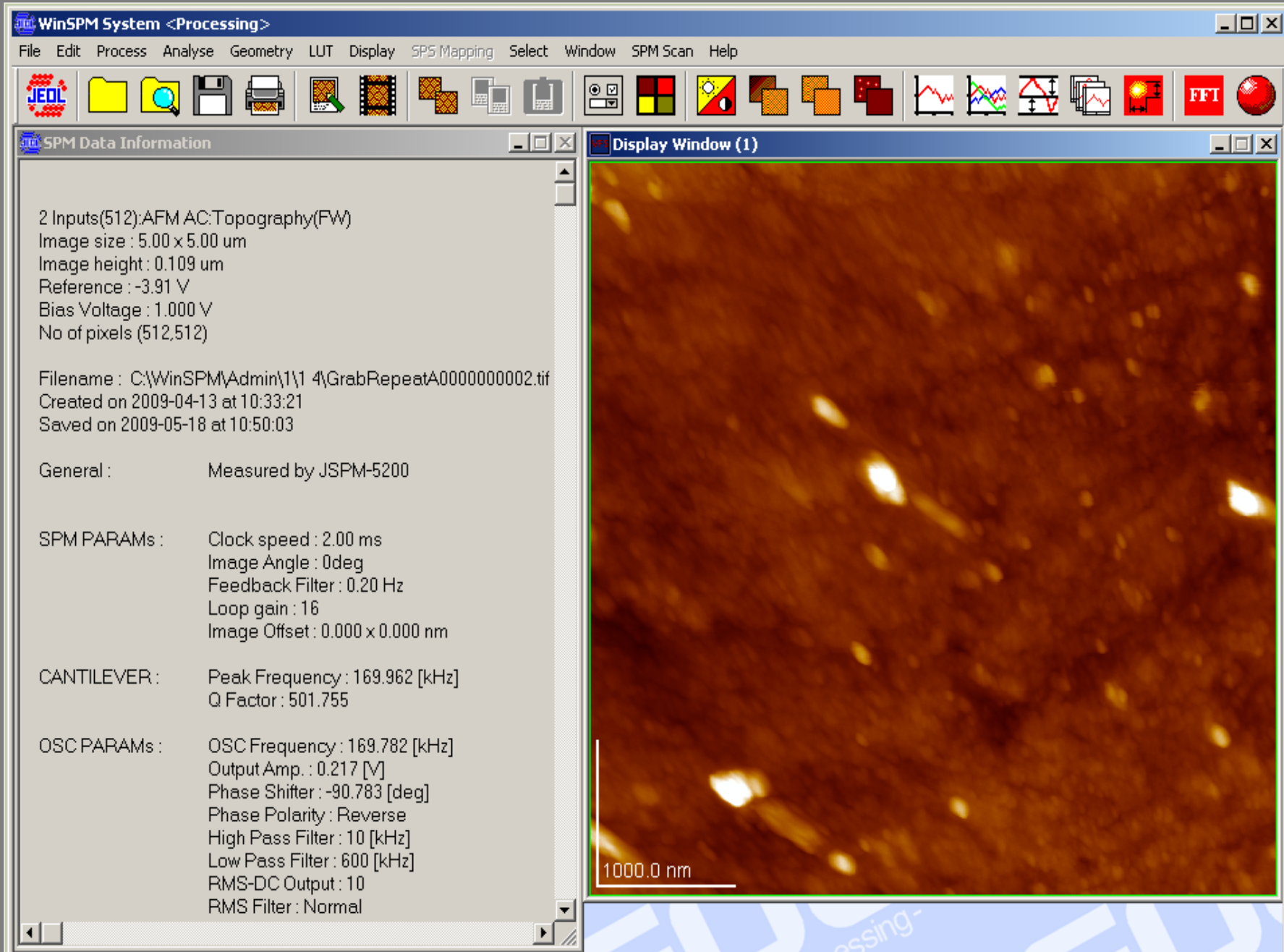


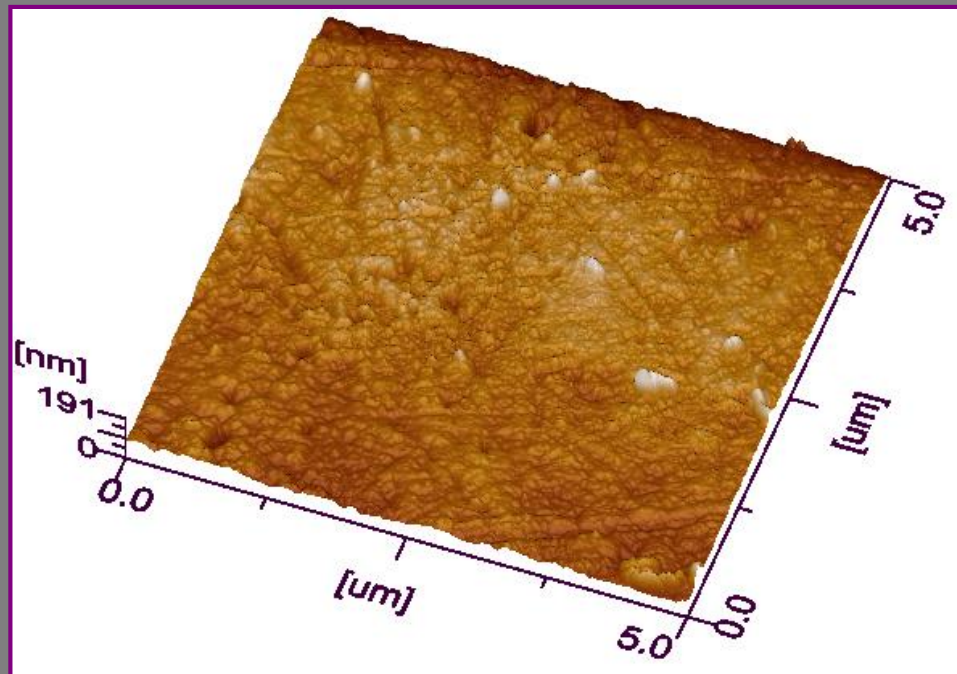
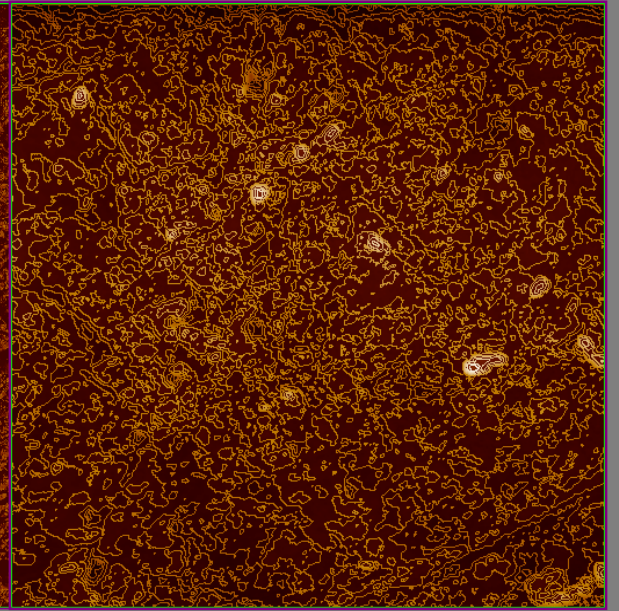
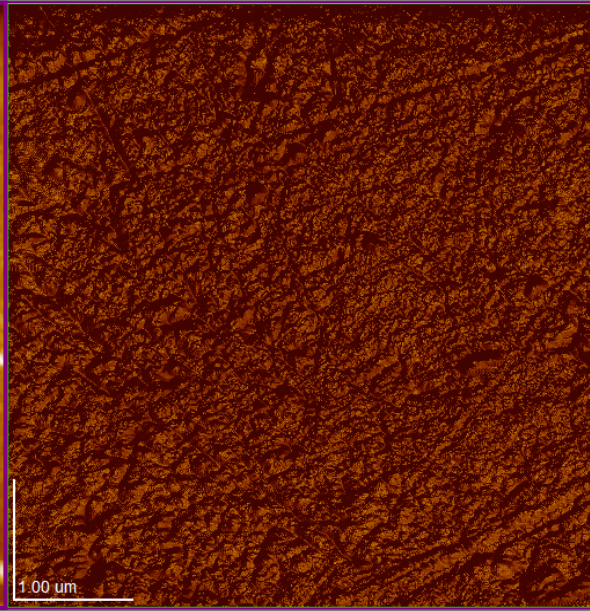
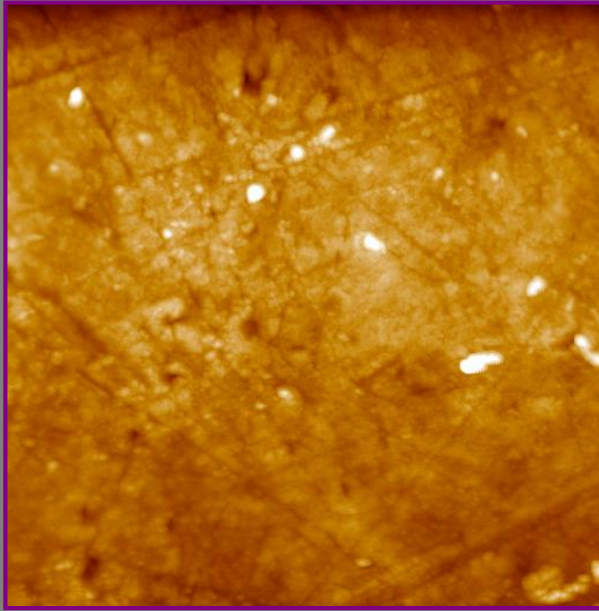
Облик мерног пипка четвороугаона пирамида висине 10÷15 $\mu\text{m}$

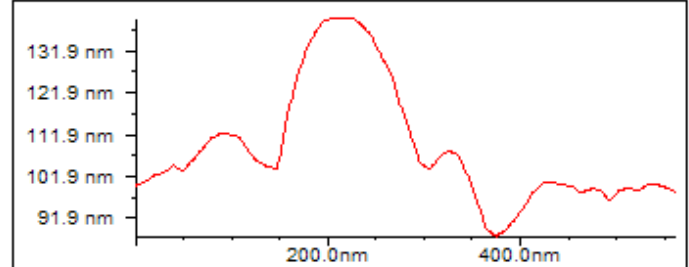
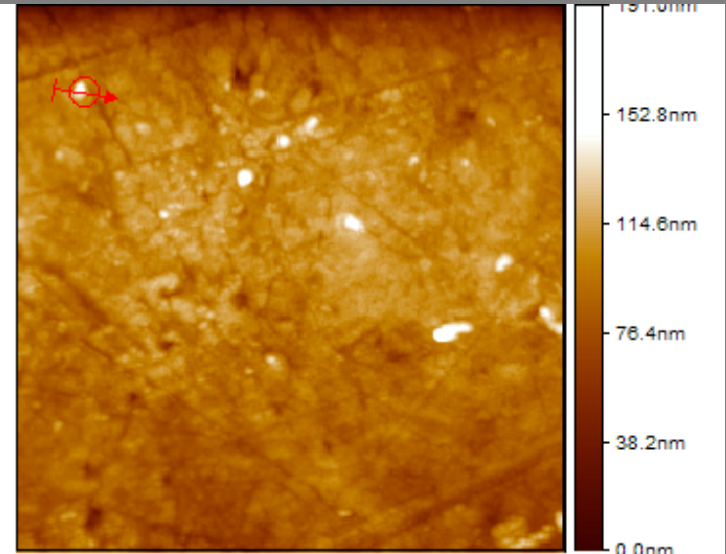
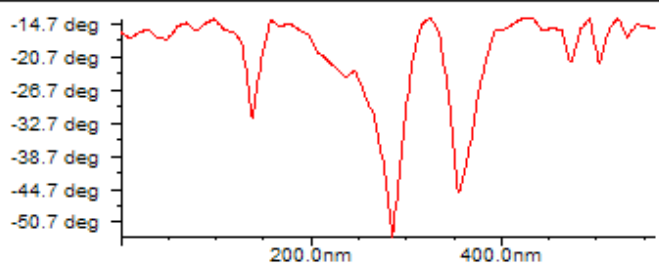
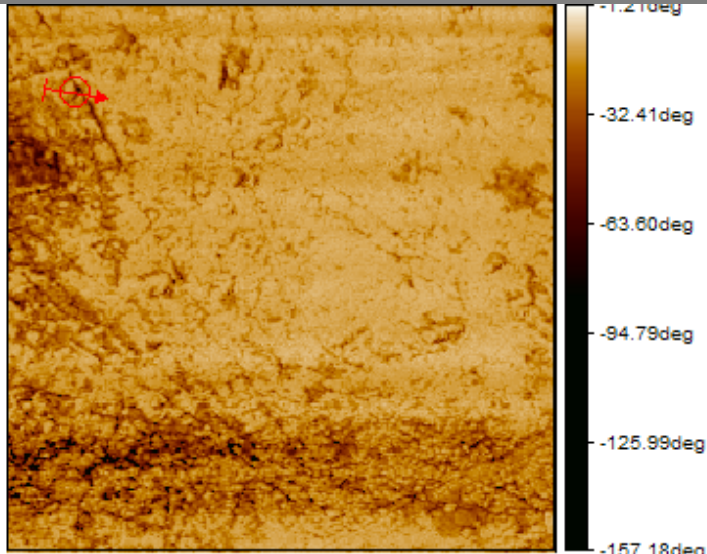
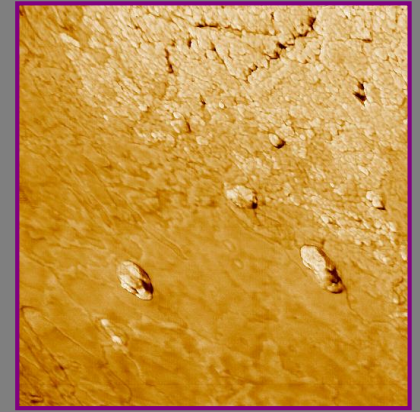
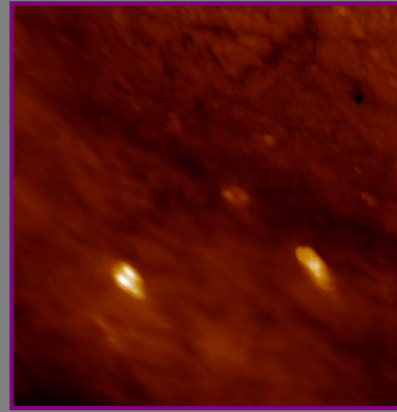
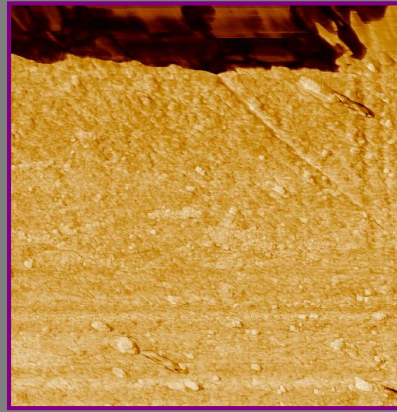
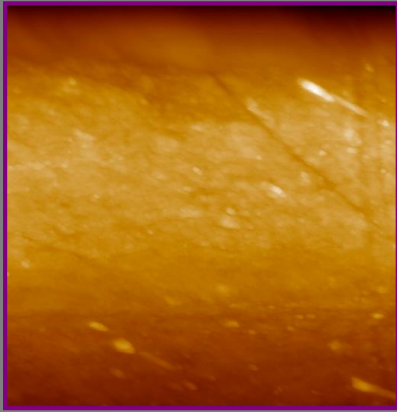


Последњих 200 nm врх пирамиде прелази у врх конуса  
Полуугао на самом врху око 10°  
Полупречник врха је мањи од 7 nm





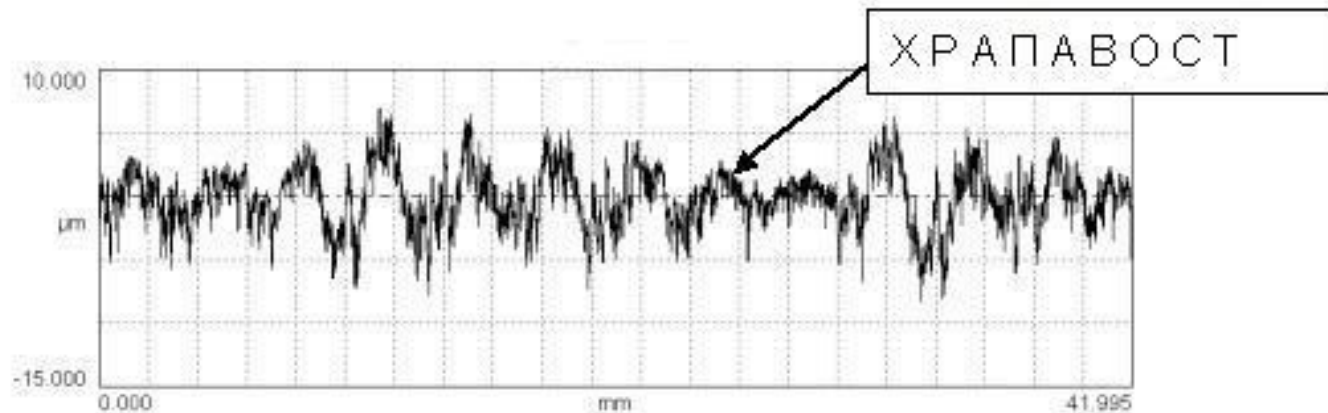
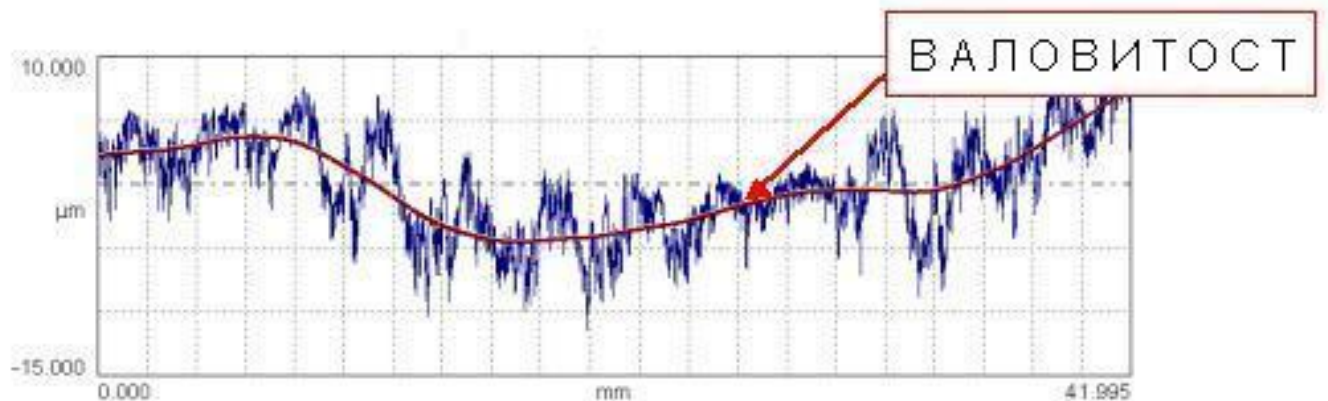




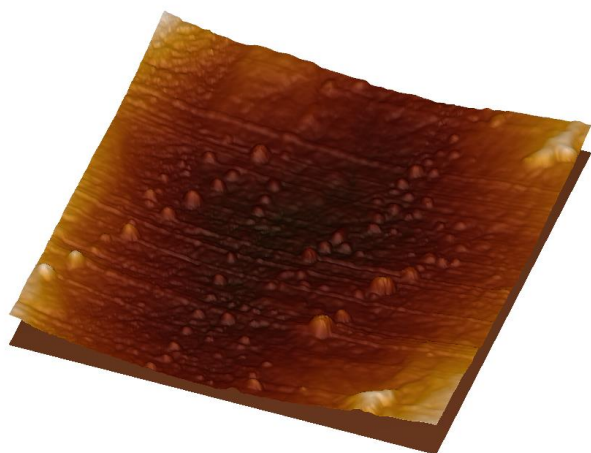
Мултискална топографија, се појављује у пет нивоа топографије у складу са дужином скале и нема јасну линију раздвајања

1. грешке у облику,
2. валовитост,
3. микро-храпавост (технолошка),

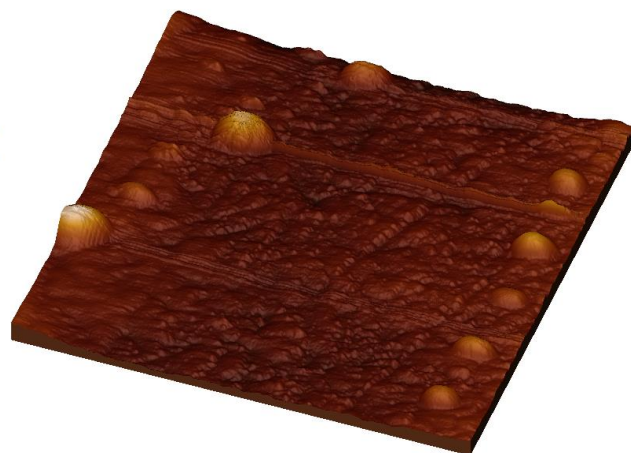
стандардизована



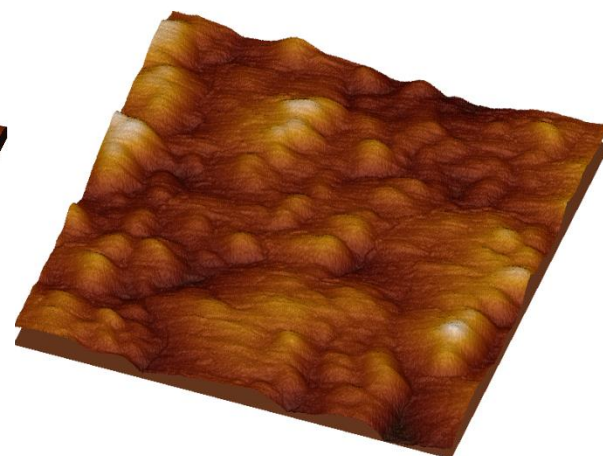
15 $\mu\text{m}$ x15 $\mu\text{m}$

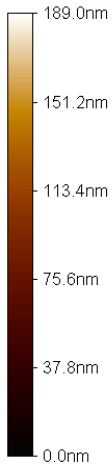
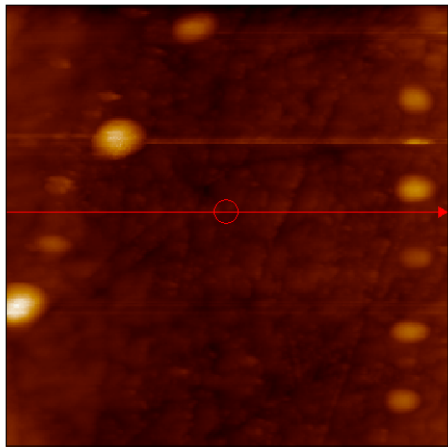


5 $\mu\text{m}$ x5 $\mu\text{m}$



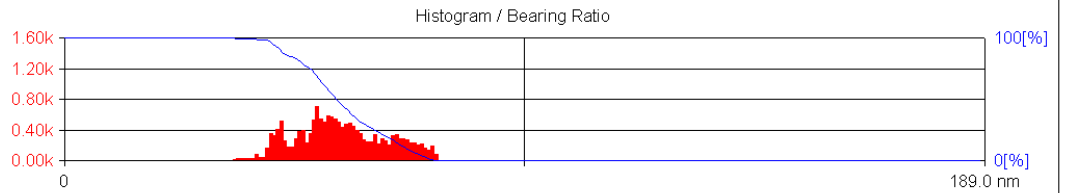
1 $\mu\text{m}$ x1 $\mu\text{m}$





Profile information

Ra = 7.57 nm      Rzjis = 0.000 nm  
 Rz = 40.8 nm      Length = 4.97 um  
 Rq = 9.19 nm



AFM AC

Ref: -3.861 [V]

Size: 5.00 [um]

Bias: 1.000 [V]

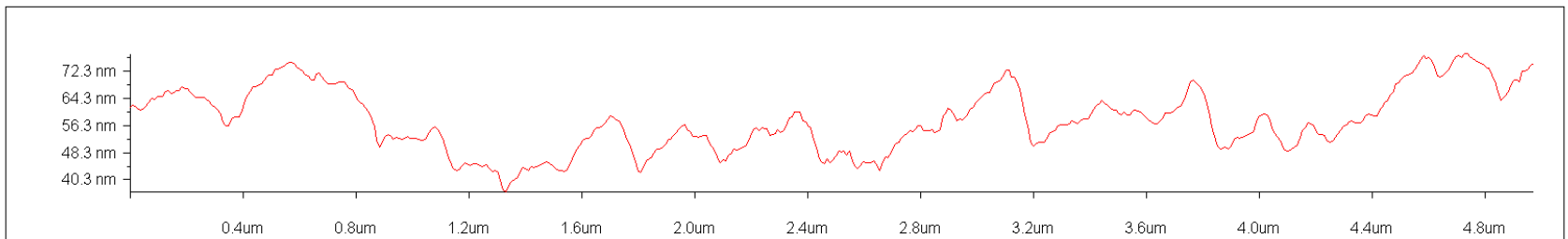
Z1 ● [nm]

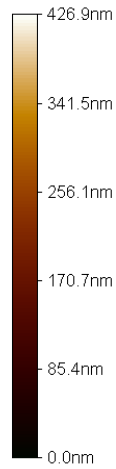
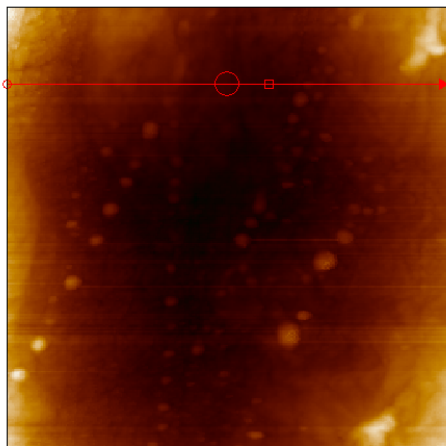
Z2 ■ [nm]

|Z1-Z2| [nm]

Length [um]

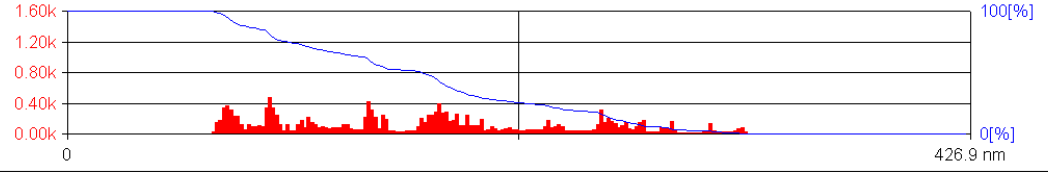
ANGLE [deg]





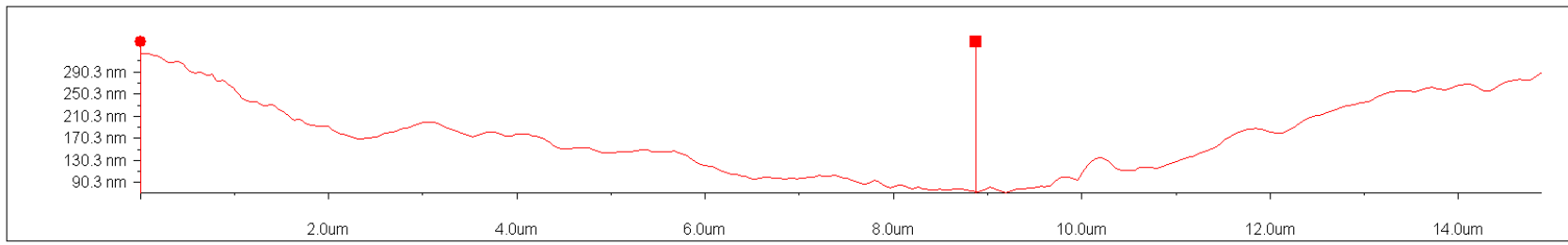
Profile information

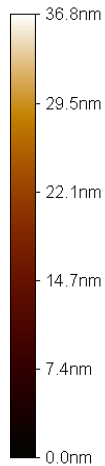
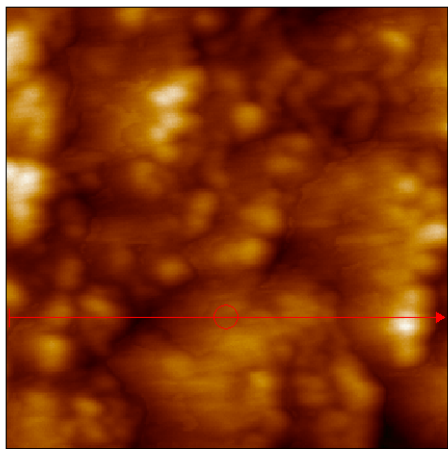
Ra = 56.6 nm      Rzjis = 0.000 nm  
 Rz = 251.7 nm      Length = 14.9 um  
 Rq = 67.6 nm  
 Histogram / Bearing Ratio



AFM AC      Ref: -3.825 [V]  
 Size: 15.0 [um]      Bias: 1.000 [V]

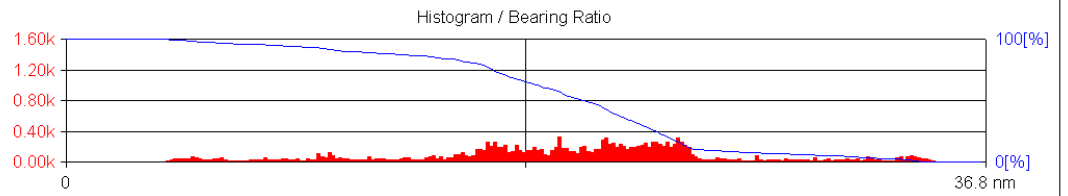
		1
Z1 ● [nm]		319.4
Z2 ■ [nm]		71.9
[Z1-Z2] [nm]		247.4
Length [um]		8.87
ANGLE [deg]		-1.60





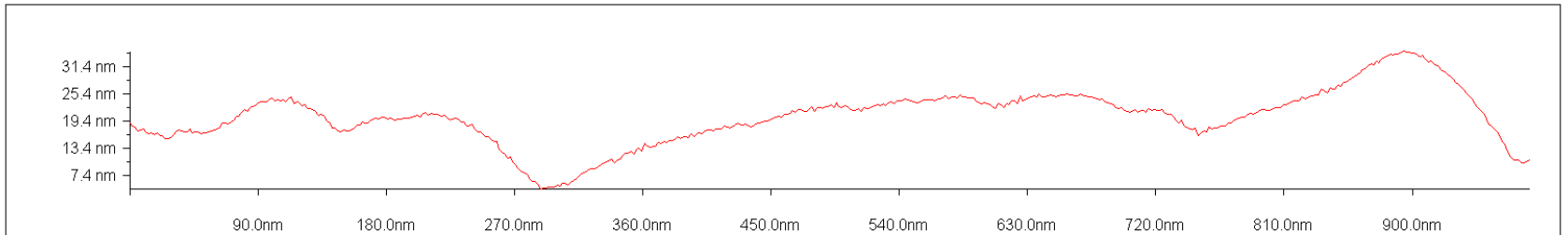
Profile information

Ra = 4.46 nm      Rzjs = 0.000 nm  
 Rz = 30.3 nm      Length = 0.982  $\mu$ m  
 Rq = 5.94 nm



AFM AC      Ref: -3.861 [V]  
 Size: 1.00 [ $\mu$ m]      Bias: 1.000 [V]

Z1 ● [nm]  
 Z2 ■ [nm]  
 |Z1-Z2| [nm]  
 Length [ $\mu$ m]  
 ANGLE [deg]



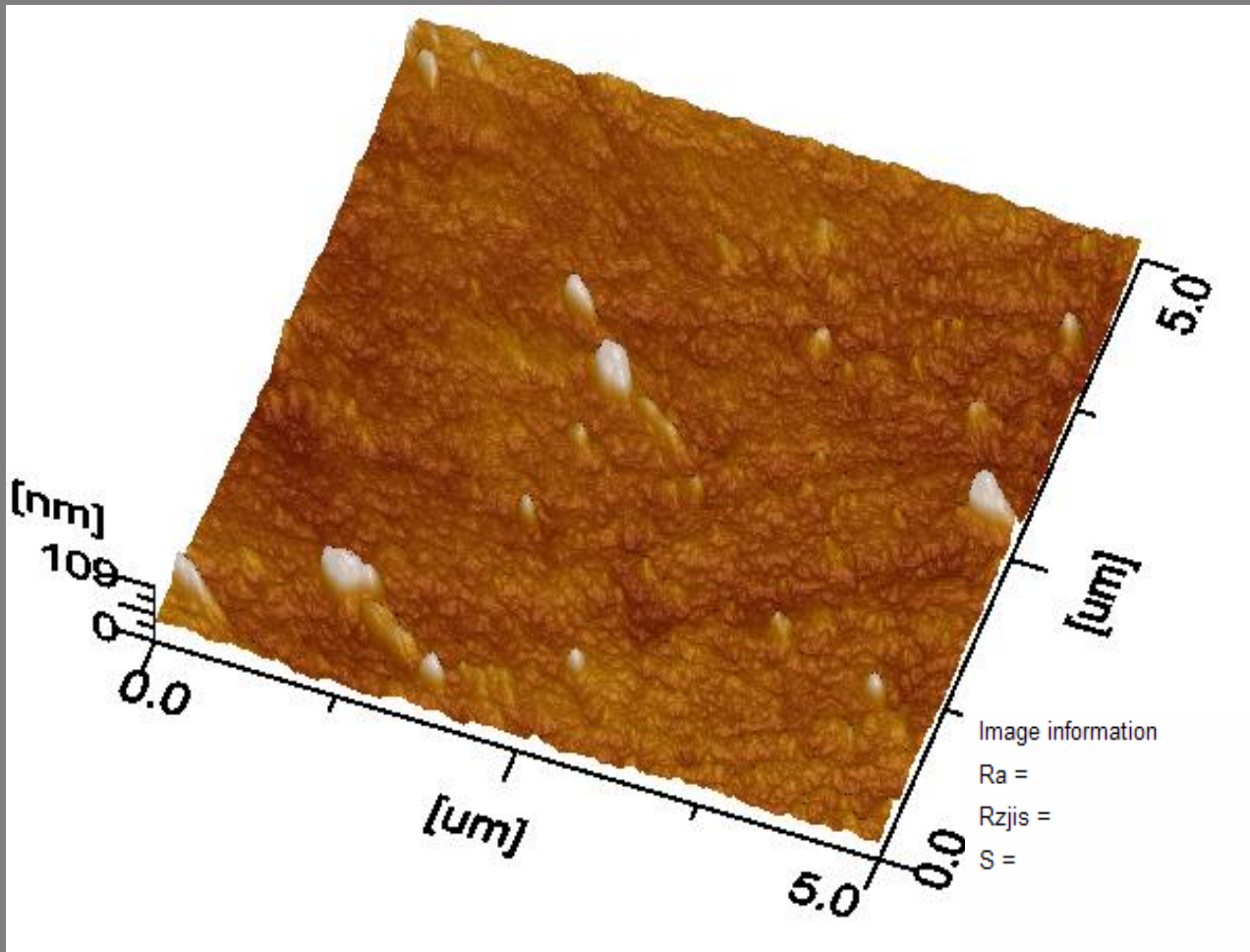
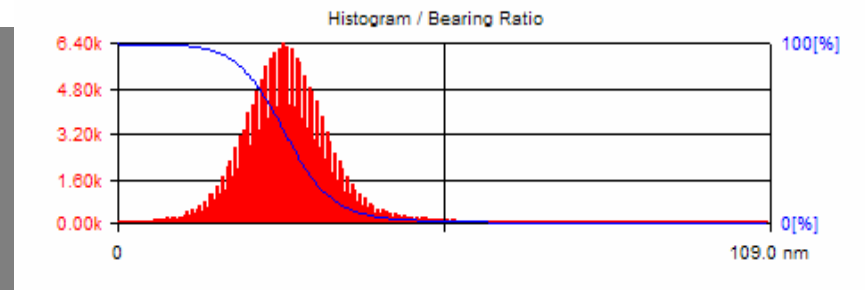


Image information

Ra =	6.10 nm	Rq =	8.99 nm
Rzjis =	92.1 nm	Rz =	108.6 nm
S =	25.5 um	S ratio =	1.02



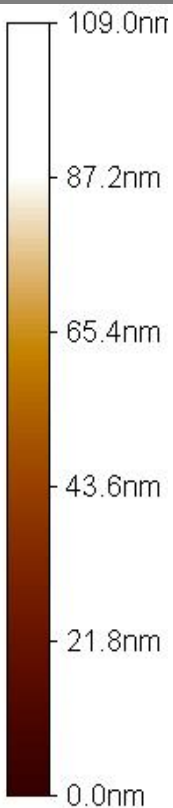
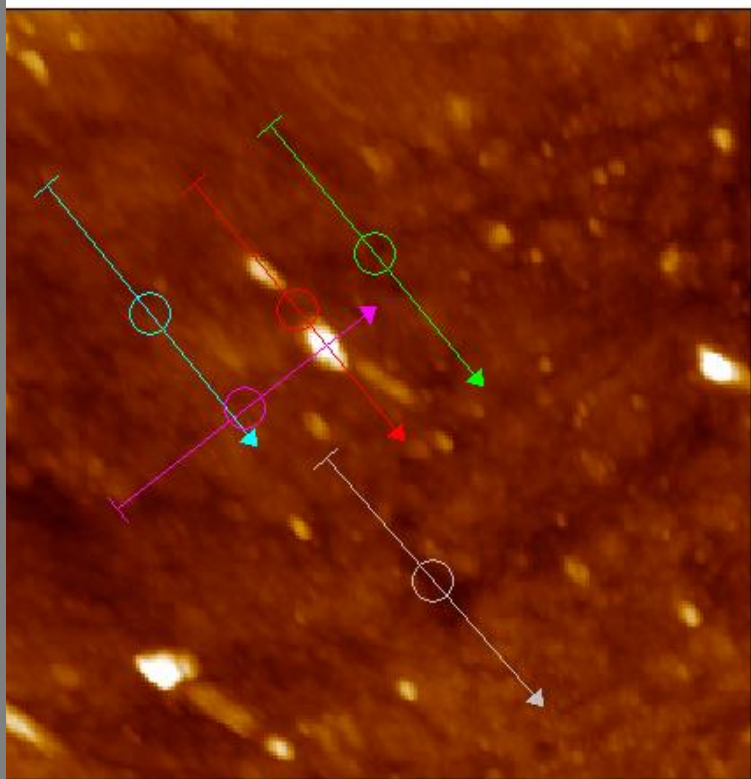


Image information			
Ra =	6.10 nm	Rq =	8.99 nm
Rzjis =	92.1 nm	Rz =	109.0 nm
S =	25.5 uml	S ratio =	1.02

	1	2	3	4	5
Ra [nm]	20.2	4.08	7.23	4.24	10.5
Rzjis [nm]	0.000	0.000	0.000	0.000	0.000
Rq [nm]	23.2	4.95	8.60	4.62	18.0
Rz [nm]	75.2	20.0	31.5	16.1	86.1
Length [um]	2.17	2.19	2.15	2.17	2.15

